



MOUNTAIN WEST
COMMERCIAL REAL ESTATE



RETAIL PADS AVAILABLE

3500 SOUTH 5600 WEST • WEST VALLEY CITY • UTAH • 84120

FOR SALE, GROUND LEASE, OR BTS

PROPERTY SPECS

- Retail Pads Available: 1.0 Acre and 0.89 Acres
- Anchored by a New 144 Unit Multi-Family Project
- High Density: 125,189 Population (3 Miles)
- Possible Uses – Retail, Office, Multi-Family, Medical
- 31,000 Cars/Day on 5600 West
- 21,000 Cars/Day on 3500 South
- \$25 PSF

1 MILE	16,971 2020 EST. POPULATION	4,751 2020 EST. HOUSEHOLDS	\$80,224 2020 EST. MEDIAN HH INCOME
3 MILE	116,348 2020 EST. POPULATION	32,657 2020 EST. HOUSEHOLDS	\$70,882 2020 EST. MEDIAN HH INCOME
5 MILE	241,638 2020 EST. POPULATION	71,589 2020 EST. HOUSEHOLDS	\$69,856 2020 EST. MEDIAN HH INCOME

CONTACT:

SCOTT BRADY

sbrady@mtwest.com

direct 801.456.8804

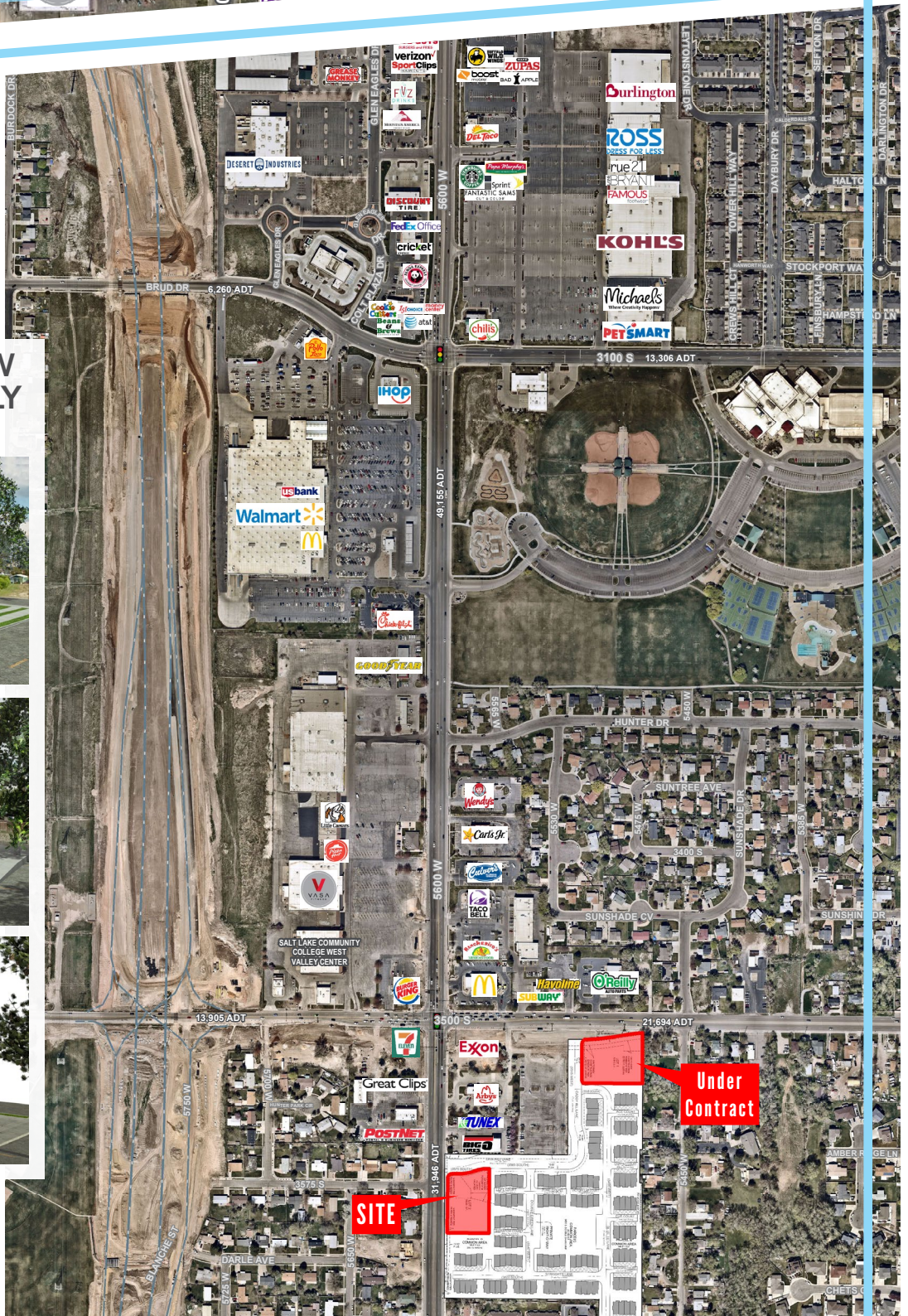
[View Profile](#)



RETAIL - INVESTMENT - INDUSTRIAL - LAND - OFFICE - URBAN

RETAIL PADS AVAILABLE

ANCHORED BY A NEW
144 UNIT MULTI-FAMILY
PROJECT



CONTACT:

SCOTT BRADY

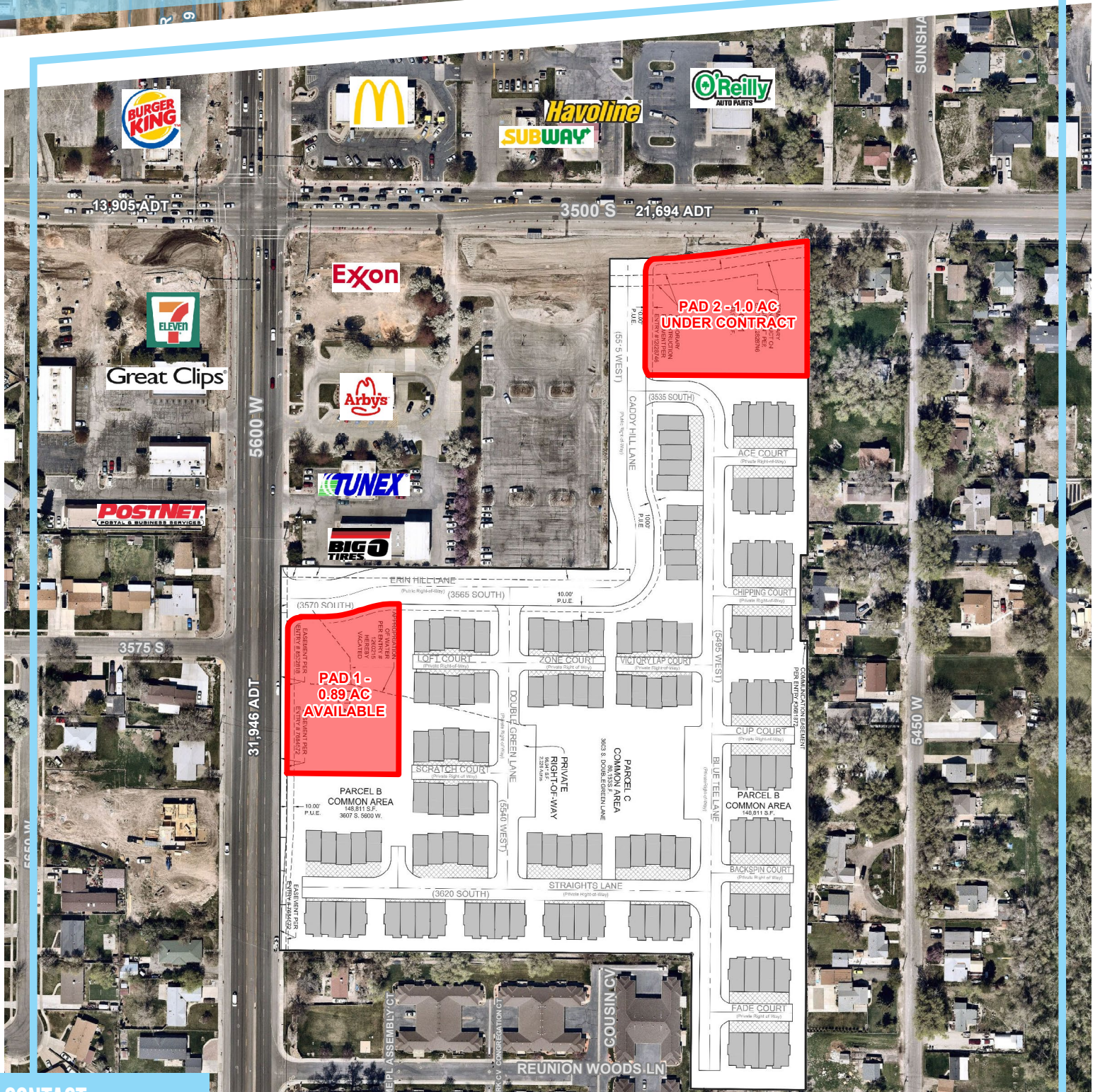
sbrady@mtnwest.com

direct 801.456.8804

[View Profile](#)



RETAIL PADS AVAILABLE



CONTACT:

SCOTT BRADY

sbrady@mtnwest.com

direct 801.456.8804

[View Profile](#)

